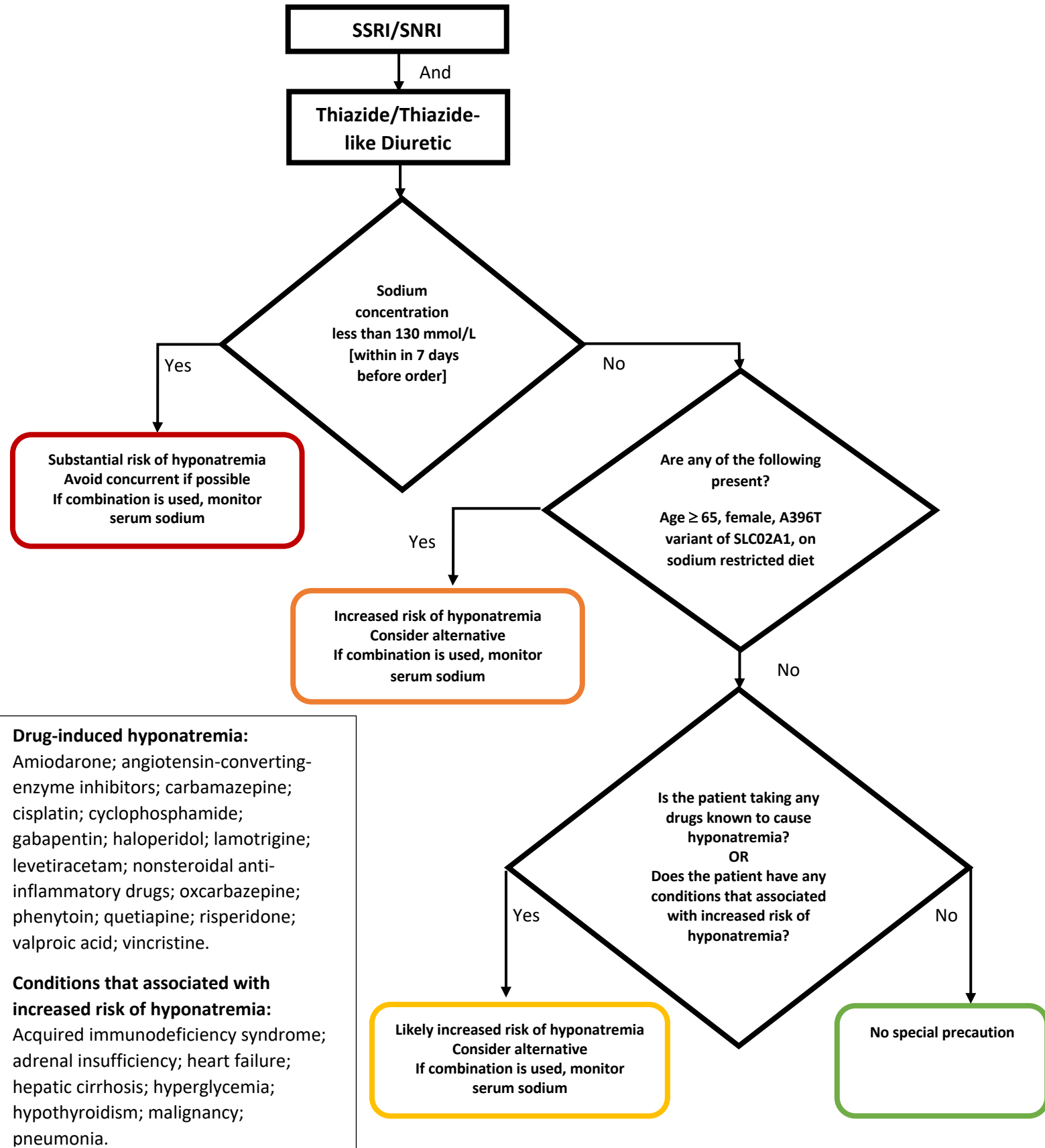


SSRI/SNRI and Thiazide/Thiazide-like Diuretics  
In-patient Interaction Algorithm



**Drug-induced hyponatremia:**  
Amiodarone; angiotensin-converting-enzyme inhibitors; carbamazepine; cisplatin; cyclophosphamide; gabapentin; haloperidol; lamotrigine; levetiracetam; nonsteroidal anti-inflammatory drugs; oxcarbazepine; phenytoin; quetiapine; risperidone; valproic acid; vincristine.

**Conditions that associated with increased risk of hyponatremia:**  
Acquired immunodeficiency syndrome; adrenal insufficiency; heart failure; hepatic cirrhosis; hyperglycemia; hypothyroidism; malignancy; pneumonia.

**RED:** Class 1: Avoid (Risk >> benefit)  
**ORANGE:** Class 2: Usually avoid (alternative or if benefit > risk)  
**YELLOW:** Class 3: Minimize risk (consider alternatives, circumvent, monitor)  
**GREEN:** Class 4: No Special Precautions (risk << benefit)