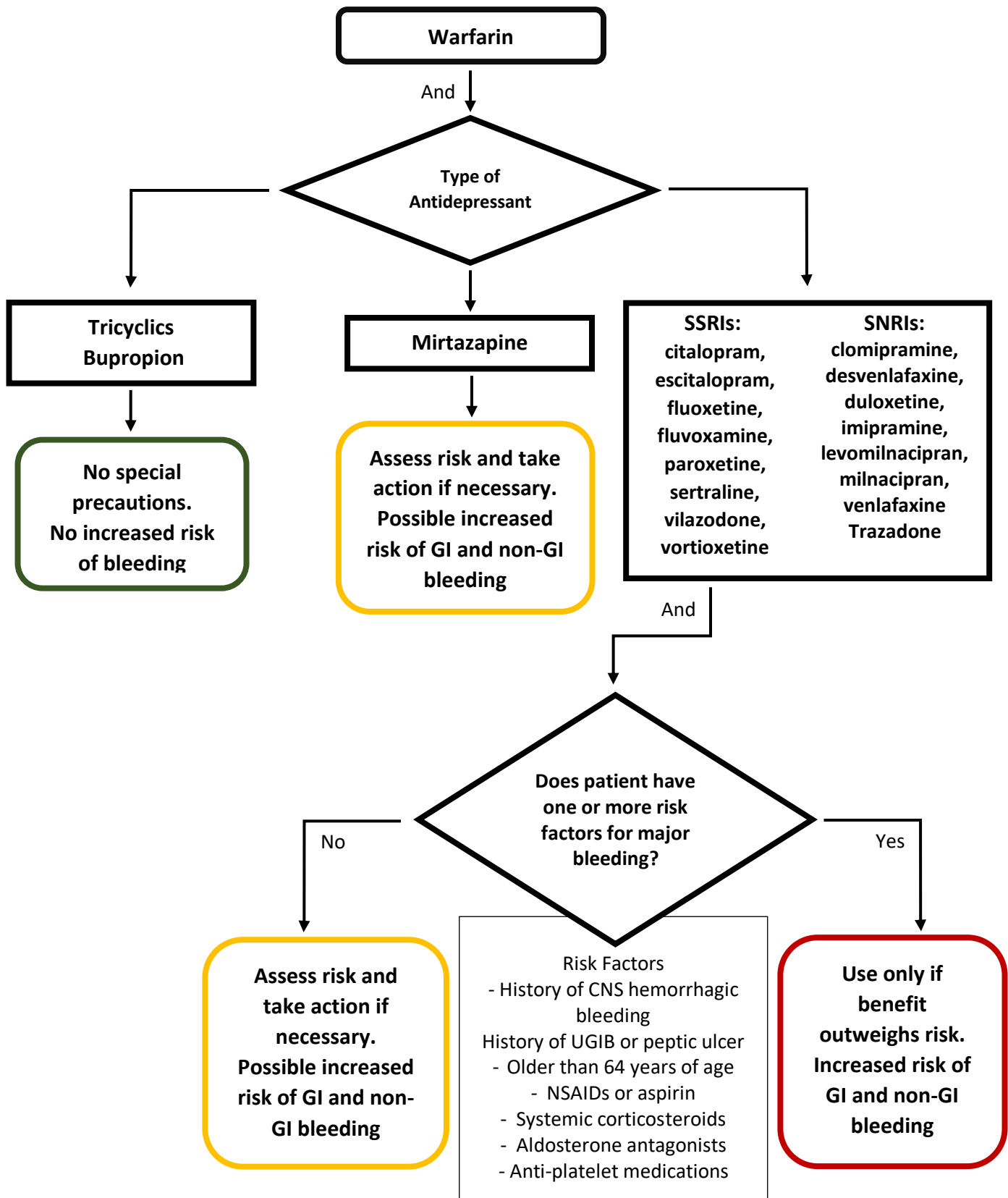


Warfarin and Antidepressants



RED: Class 2: Use Only if Benefit Outweighs Risk
YELLOW: Class 3: Assess Risk as Take Action if Necessary
GREEN: Class 4: No Special Precautions

GI = gastrointestinal
 CNS= central nervous system
 NSAID= non-steroidal anti-inflammatory drugs